



Parking uphill and Downhill

On severe gradients you need to ensure that your car does not rollback due to force of gravity when it is parked. In addition to using your parking brake you can use following methods to stop the car from rolling.



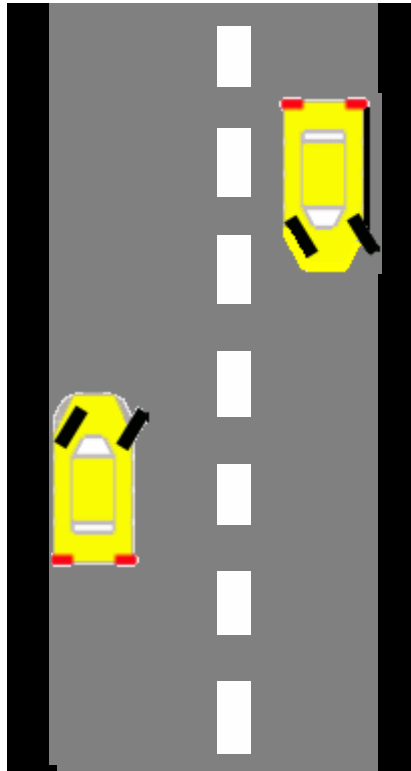
Facing uphill

- Stop as near to the kerb as possible, apply the parking brake.

- Leave your steering turned to the right. If your car rolls back it will be stopped by the front wheel wedging into the kerb.

- Place the gear lever in 1st gear.

- If there is no kerb, leave your steering turned to the left. If your car rolled back it won't roll across the road.



Facing downhill

- Stop as near to the kerb as possible, apply the parking brake.

- Leave your steering turned to the left. If your car rolls forward it will be stopped by the front wheel wedging into the kerb.

- Place the gear lever in reverse gear.



Automatic cars

whether you are facing uphill or downhill make sure that you firmly apply the parking brake and place the selector to **P** position.