



Meeting oncoming vehicles

Meeting oncoming vehicles can be very hazardous unless it is planned and executed with good timing. Meeting situations occur when you need to use the same piece of road at the same time as the oncoming traffic. This is quite a common occurrence in built up areas with crowded streets and dense traffic flows.

When facing a meeting situations you need to consider the following points before proceeding:-

- The width of the road you are on
- The size of your and the oncoming vehicle
- Space taken up by oncoming vehicle
- Space taken up by your vehicle
- Any signs and markings to establish priority
- Speed of both vehicles



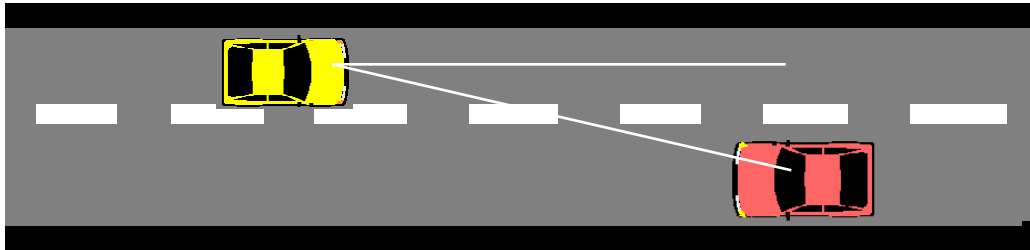
Road can be narrow for number of reasons, for example :-

- Parked vehicles on one or both sides.
- Road works
- Single track country lanes
- Chicanes or other traffic calming measures

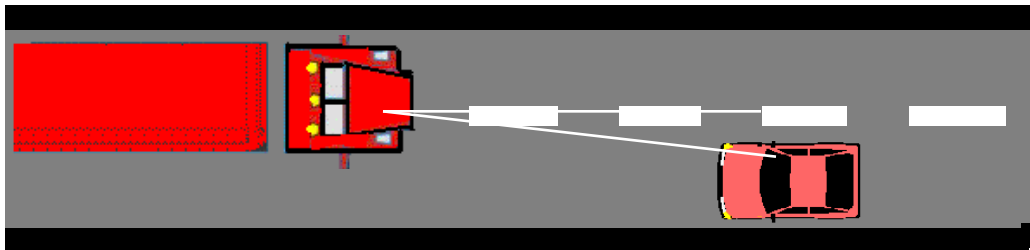
Advance planning with defensive driving attitude is the key to negotiating meeting situations safely. Early application of MSPSL routine is essential.

The most appropriate signal you can give to oncoming vehicles is the brake lights or the slowing down arm signal. Do not flash your headlights or beckon with your hands to invite them to proceed.

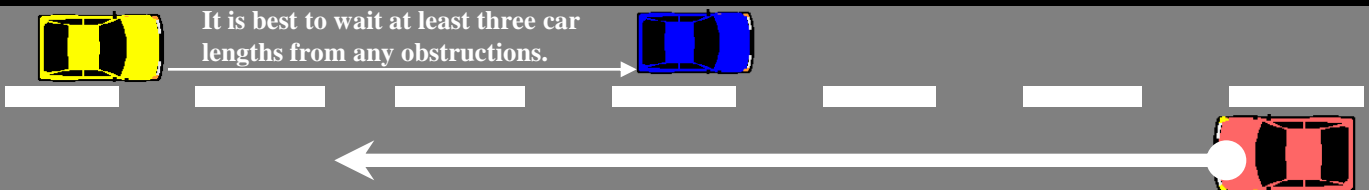
On a quite side street where the road is wide enough for two car widths, you may be able to continue without having to slow down.



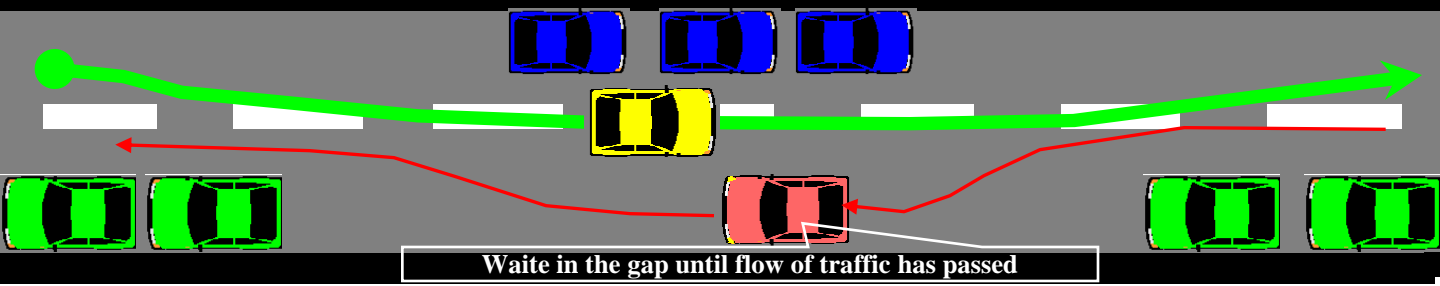
If the same road is being used by a large oncoming vehicle you might need to slow down to accommodate the vehicle .



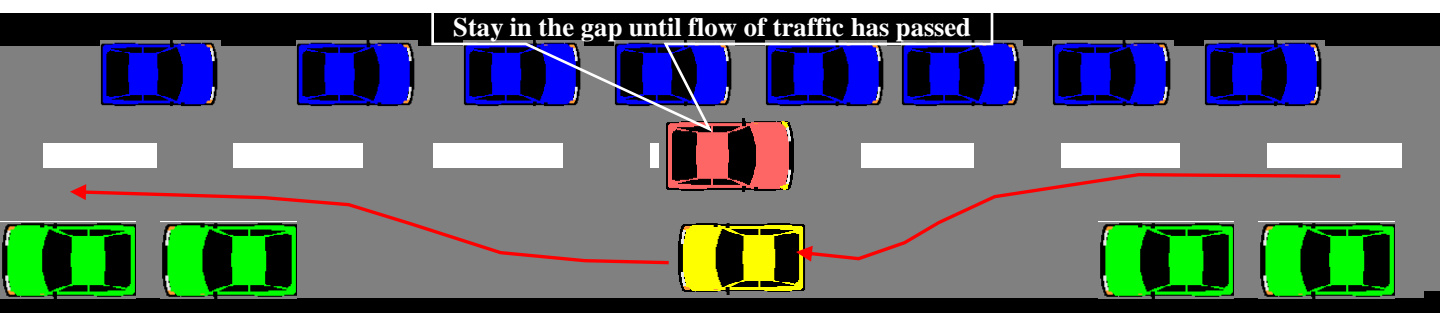
At times you will need to make judgment by comparing the road position of your and the oncoming vehicle with the centre line of the road, if either of you are crossing the centre line then you will need to slowdown. You can also compare the angle your eyes meet the on coming drivers eyes, if you sense that the angle is very narrow then you are unlikely to have sufficient space to continue, hence you must slow down as you come to meet the vehicle.



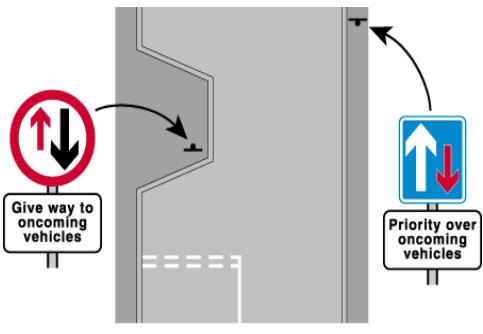
Where there are obstructions on one side or the other, the priority is decided by on whose side of the road the stationary hazard is as well as how much clearance is available. If the obstruction is on your side you must give way. If it is your priority and the oncoming vehicle is being driven by an inconsiderate aggressive driver who is acting like a bull in a china shop , then give way to them regardless who has the priority. You should always be prepared to give way for the sake of safety regardless who has priority.



On roads where there are obstructions on both sides you will need to find gaps in the parking spaces and wait there until a safe gap comes up in the opposing flow of traffic.



At some places there are traffic calming measures introduced by the highways authorities to slow the flow of traffic, for example near schools, these places are generally known as chicanes, in these situations one stream of traffic has priority over the other. When approaching such places lookout for road signs and markings to establish who has the priority. If the oncoming vehicle has first right of way then you must holdback in a position where the vehicles can pass unimpeded. If you have the priority do not assume the oncoming driver is going to abide by the rules and stop for you.



When driving in country lanes you will come across many single track roads where there is only space for one vehicle. In these situations pull-in to the passing place to let the oncoming vehicle go through. At times you may have to reverse back for considerable distance to allow oncoming vehicles to pass.

